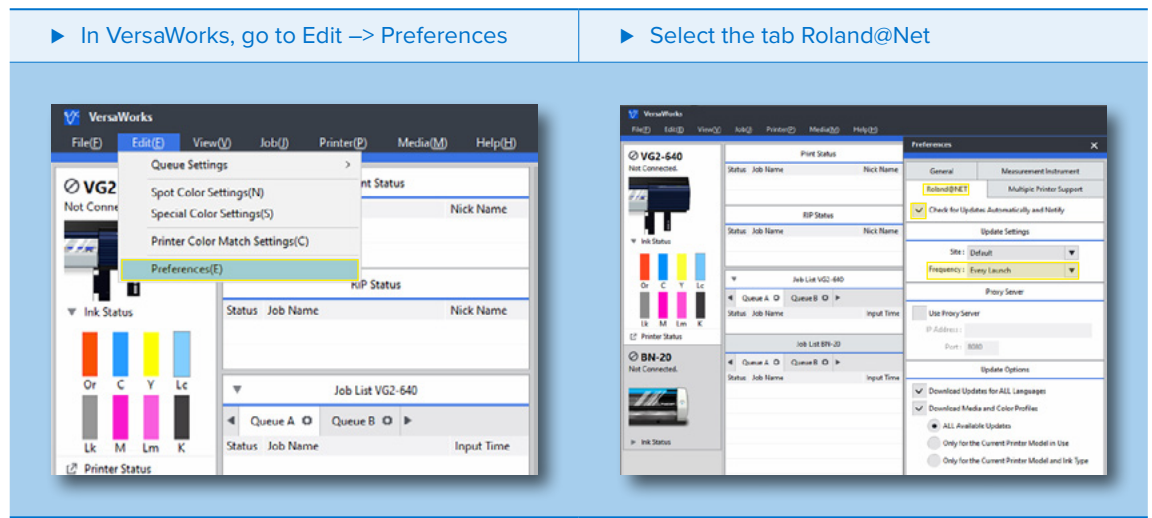


Don't miss out on **future VersaWorks upgrades**

VersaWorks can be configured to check for new updates automatically in the main VersaWorks repository. Alternatively, upgrades can be downloaded manually via the install folder. To use this feature, however you need to **ensure that you've upgraded your current version to VersaWorks 6.7** (or later). Once you've upgraded to the correct version, please follow the steps below to upgrade your VersaWorks installation in the future.

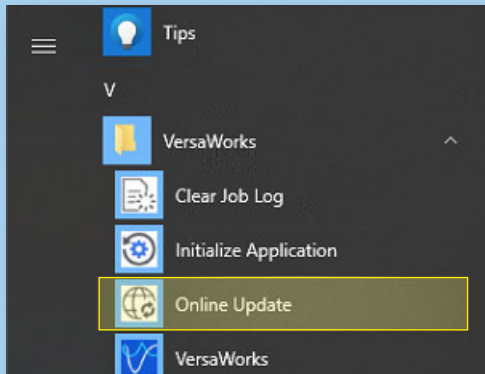
1. Set VersaWorks to update automatically:



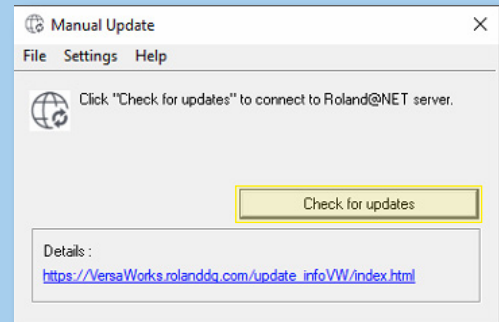
- ▶ In VersaWorks, go to Edit → Preferences
 - ▶ Select the tab Roland@Net
- ▶ Activate **“Check for Updates Automatically and notify”**
 - ▶ Select the download site, use **Default**
 - ▶ Select how often VersaWorks should check for new updates.
 - ▶ If you use a proxy server, please fill in the requested parameters.
 - ▶ Select what should be downloaded for your VersaWorks installation, based on your own needs and preferences (larger downloads take longer to complete):
 1. *Download updates for all languages or just the active one.*
 2. *Download Media and Colour Profiles*
 - When unchecked VersaWorks will download all available Media Profiles and Colour profiles.
 - When checked you can select which should be downloaded.
 1. *All available updates*
 2. *Only for the currently used printer model*
 3. *Only for the currently used printer model and ink type*

2. To update VersaWorks manually:

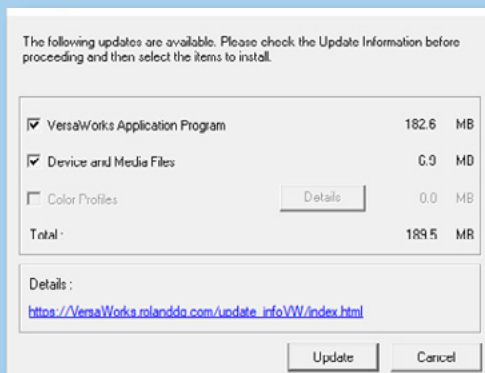
- ▶ Click on the Windows Start menu > VersaWorks > Online Update



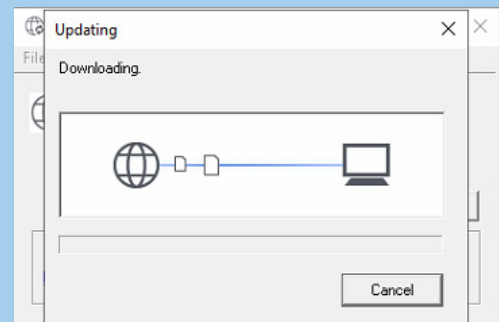
- ▶ Run the program, then select "Check for Updates"



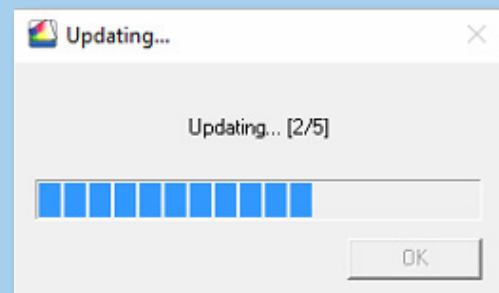
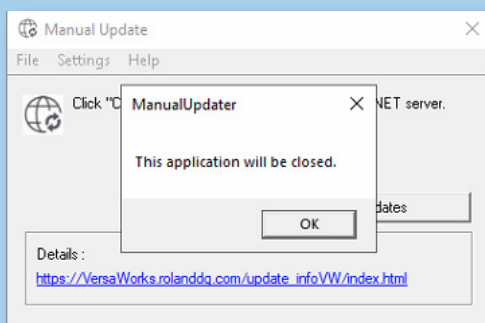
- ▶ The Manual Update tool will check the main VersaWorks repository for available updates. Select what should be updated for your existing installation, then click "Update"



- ▶ All selected updates will be downloaded



- ▶ Once downloaded, click "OK" to close the application and start the updating process.



How to **upgrade** my current installation to **VersaWorks 6.7**

Product owners that already have VersaWorks 6 installed, can **easily upgrade to software version 6.7** by taking the following steps:

1. Download the latest version of VersaWorks.

- ▶ Download VersaWorks full installer via the Manual Library:
<https://webmanual.rolanddg.com/VersaWorks6>

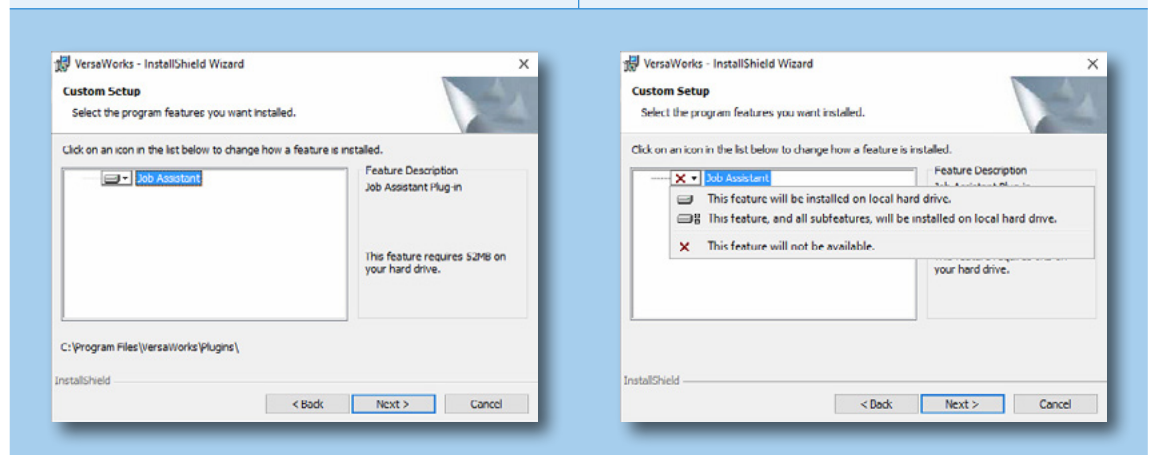
2. Execute VersaWorks 6.7 Installer

- ▶ **Important** – In order to keep your current preferences, printer settings and job information, do not uninstall your current version of VersaWorks 6
- ▶ Instead, choose to overwrite / modify the current installation.

3. Select the Job Assistant feature

- ▶ During the modified installation process, you will be asked to select the “Job Assistant” feature, click “Next”

- ▶ In the next step select “This feature will be installed on local hard drive”, click “Next”.



4. VersaWorks has been upgraded

- ▶ VersaWorks has been **upgraded to the latest version, VersaWorks 6.7**, including the new Job Assistant tool.