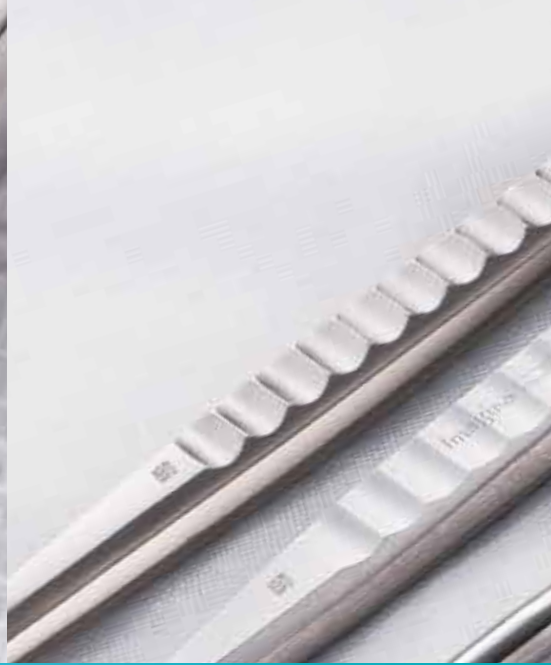




Desktop Impact Printer for UDI Barcode Marking

**METAZA**

**MPX-95**



# Affordable track and trace

## Marking solution for medical instruments and industrial components

The MPX-95 direct part marking (DPM) impact printing solution marks two-dimensional DataMatrix barcodes as small as 1 mm on a wide variety of medical instruments including forceps, tweezers, scalpels and other surgical tools. This versatile technology imprints unique device identification (UDI) numbers, text, logos and graphics quickly and affordably on virtually any metal surface\*<sup>1</sup> for easy tracking and traceability. Designed for ease of use, the solution comes with its own software for producing precise, durable imprints that remain readable throughout the lifetime of the product.\*<sup>2</sup>

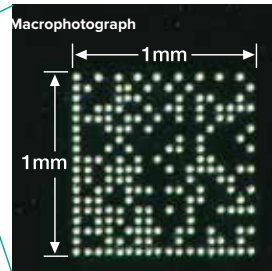
\*<sup>1</sup> Vickers hardness (HV) of the surface of imprintable materials must be 200 or less. \*<sup>2</sup> Computer and barcode scanner required for a complete UDI system.

## PRECISE

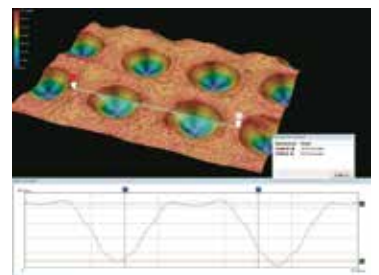
### High-speed marking with Roland's dot impact technology

The MPX-95's durable diamond-tipped stylus directly imprints on titanium, stainless steel, platinum, silver, gold and other hard metals. Engineered for speed and precision, the MPX-95 can quickly imprint a 2D code with 26 characters inside an area as small as one square millimetre.\* The MPX-95 does not burn or remove material on impact, so generates no odour or debris and leaves the marked area protected from corrosion and oxidation. No daily maintenance is required.

\* Quality is determined by the resolution of the barcode scanner.



Precision direct marking



Consistent dot size and depth

## COMPACT & EASY TO USE

### Set up is easy with the included vice and built-in laser pointer

With the MPX-95 no special training is required. The included METAZAStudio software instantly converts numerical data to 2D DataMatrix barcodes that meet GS1 and other 2D DataMatrix formats, including QR codes.

For fast set up and accurate results, simply secure the item to be marked in the multi-purpose vice and use the built-in laser pointer to locate the centre of the material to be marked. When compared with other DPM technologies, the MPX-95's ease of use, compact footprint and energy-efficient design make it the ideal solution for small office or lab environments.



Easily secure items for marking



Accurately set the correct marking location with the built-in laser pointer

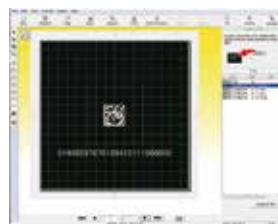


# METAZA MPX-95

## INTUITIVE SOFTWARE

Dedicated software marks 2D DataMatrix barcodes, text and logos to identify or brand devices

The included METAZAStudio software features a 2D DataMatrix barcode generator. To create a unique barcode, simply select the barcode icon from METAZAStudio's main screen and enter the appropriate UDI numbers. The software does the rest, creating a 2D DataMatrix barcode which can then be imprinted. METAZAStudio also imports CSV spreadsheet files for variable data printing. This allows you to quickly and easily add a unique 2D DataMatrix barcode to individual devices in a series. Support for jpg, bmp and Adobe Illustrator 8 file formats enables you to import logos and other custom branding elements.



Included METAZAStudio Software

■ Import CSV files for variable data printing

UDI	Doctor	Specialty
01498297870129412111080005	Dr. K. McCoy	Neurosurgery
01498297870129412111080006	Dr. B. Johnson	Orthopaedics
01498297870129412111080007	Dr. E. Jones	Obstetrics and Gynaecology
01498297870129412111080008	Dr. N. White	Paediatric Surgery

■ Imprint logos and other graphics to brand devices



## VERSATILE

Mark instruments and objects in a wide range of shapes and sizes

For even greater versatility, the base plate and base unit can be removed for imprinting onto much larger medical tools, devices and industrial equipment. The MPX-95 DPM solution also includes a medical sliding vice with flexible over-grip to secure surgical instruments and other industrial components and a sliding centre vice, all enabling users to effectively mark onto intricately shaped surgical equipment, machinery and tools.



### Production is Easy

#### Create data



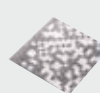
Import or create your data using the included METAZAStudio software

#### Secure the item



Using the vice, securely affix the item to the work table and position it for imprinting using the built-in laser pointer

#### Imprint



Directly mark the instrument or tool using the MPX-95

#### Track



Read the barcode with a barcode scanner\* to verify proper tracking and traceability

\* A separate barcode scanner is required for tracking



# METAZA MPX-95

Specifications		
Imprintable material		Gold, silver, copper, platinum, brass, aluminium, iron, stainless steel, etc. (Vickers hardness [HV] of the imprint surface must be 200 or less.)
Loadable material size		Using a base table + base plate : Max. 100 mm (W) × 200 mm (L) × 40 mm (H) (3.9 in. × 7.9 in. × 1.6 in.) or 200 mm (W) × 100 mm (L) × 40 mm (H) (7.9 in. × 3.9 in. × 1.6 in.) Using a base plate only : Max. 100 mm (W) × 200 mm (L) × 70 mm (H) (3.9 in. × 7.9 in. × 2.8 in.) or 200 mm (W) × 100 mm (L) × 70 mm (H) (7.9 in. × 3.9 in. × 2.8 in.) The above are when the cover is closed. When the cover is open, there is no limit on how large the material can be, but the imprint area of the material must be placed within the imprint area.
Imprint area	Maximum imprintable area	80 mm (W) × 80 mm (D) × 70 mm (H) (3.2 in. × 3.2 in. × 2.8 in.)
	Recommended imprint area	50 mm (W) × 50 mm (D) × 70 mm (H) (2.0 in. × 2.0 in. × 2.8 in.)
Resolution		529 dpi (High resolution), 353 dpi (Photo), 265 dpi (Text), 1058 dpi (Vector)
Imprint direction		Unidirectional imprinting or bidirectional imprinting (Selectable with Windows driver)
Imprint speed (Default)		50 mm/sec (2.0 in./sec) (Photo), 33 mm/sec (1.2 in./sec) (High resolution/Text), 24 mm/sec (0.94 in./sec) (Vector)
Interface		USB
Power requirements	Dedicated AC adapter	AC 100 to 240 V ±10%, 50/60 Hz
	Main unit	DC 19 V, 1.2 A
Power consumption		Approx. 21 W
Operating noise		70 dB (A) or less
Operating temperature		10 to 30 °C (50 to 86 °F)
Operating humidity		35 to 80 % (no condensation)
External dimensions		286 mm (W) × 383 mm (D) × 308 mm (H) (11.3 in. (W) × 15.1 in. (D) × 12.2 in. (H))
Weight		12 kg (26.5 lb.)
Included items		AC adapter, power cord, test-use material, USB cable, Roland Software Package CD-ROM, user's manual, etc.
DPM Kit includes	DK-1	Pinching vice × 1 pce, Movable centre vice × 1 pce, Head caps (round bottom) × 30 pces, Head caps (flat bottom) × 10 pces, Clamp pins (4 pces. × large, 4 pces. × small), Roland Software package CD × 1 pce, etc.

System Requirements for USB Connection	
Computer	Model preinstalled with Windows 10, 8.1, or 7 (32- or 64-bit), or upgraded computer originally preinstalled with Windows 7 or later
USB cable	Use the included USB cable.


Options		
	Model	Description
Head unit and head caps for replacement	MPH-90	Head unit × 1 pce and head caps × 4 pces
Replacement head caps for round surfaces	CAP-HEAD MPX-90	5 pces.
Replacement durable head caps for flat surfaces	DURABLE HEAD-CAP MPX, FLAT SURFACE	5 pces.

**Conditions when imprinting curved surfaces**

Choose material when imprinting on a curved surface taking into consideration the following limitations. These figures show the imprinting area possible for a curved surface and the area that the marking pin can reach with respect to the diameter of the cylinder when the head cap (CAP-HEAD MPX-90) is attached to the head unit.

Diameter of cylinder with extended curved surface (φ)	Recommended Imprint area (A)	Area reached by the marking pins (B)
10 mm (0.4 in.)	2.0 mm (0.08 in.)	2.8 mm (0.11 in.)
20 mm (0.8 in.)	2.8 mm (0.11 in.)	4.0 mm (0.16 in.)
30 mm (1.2 in.)	3.4 mm (0.14 in.)	4.8 mm (0.19 in.)

**Roland Care Warranty**



Enjoy the peace of mind of having one of the most comprehensive warranty packages in the industry, included with the MPX-95.

Roland DG reserves the right to make changes in specifications, materials or accessories without notice. Actual output may vary. For optimum output quality, periodic maintenance to critical components may be required. Please contact your Roland DG dealer for details. No guarantee or warranty is implied other than expressly stated. Roland DG shall not be liable for any incidental or consequential damages, whether foreseeable or not, caused by defects in such products. Reproduction or use of copyrighted material is governed by local, national, and international laws. Customers are responsible for observing all applicable laws and are liable for any infringement. All trademarks are the property of their respective owners. Roland DG Corporation has licensed the MMP technology from the TPL Group.

Imagine.



Roland DG (UK) Ltd  
Griffin House  
Windmill Road  
Clevedon  
North Somerset  
BS21 6UJ

Tel | 01275 335 540  
Fax | 01275 335 541

[www.rolanddg.co.uk](http://www.rolanddg.co.uk)